

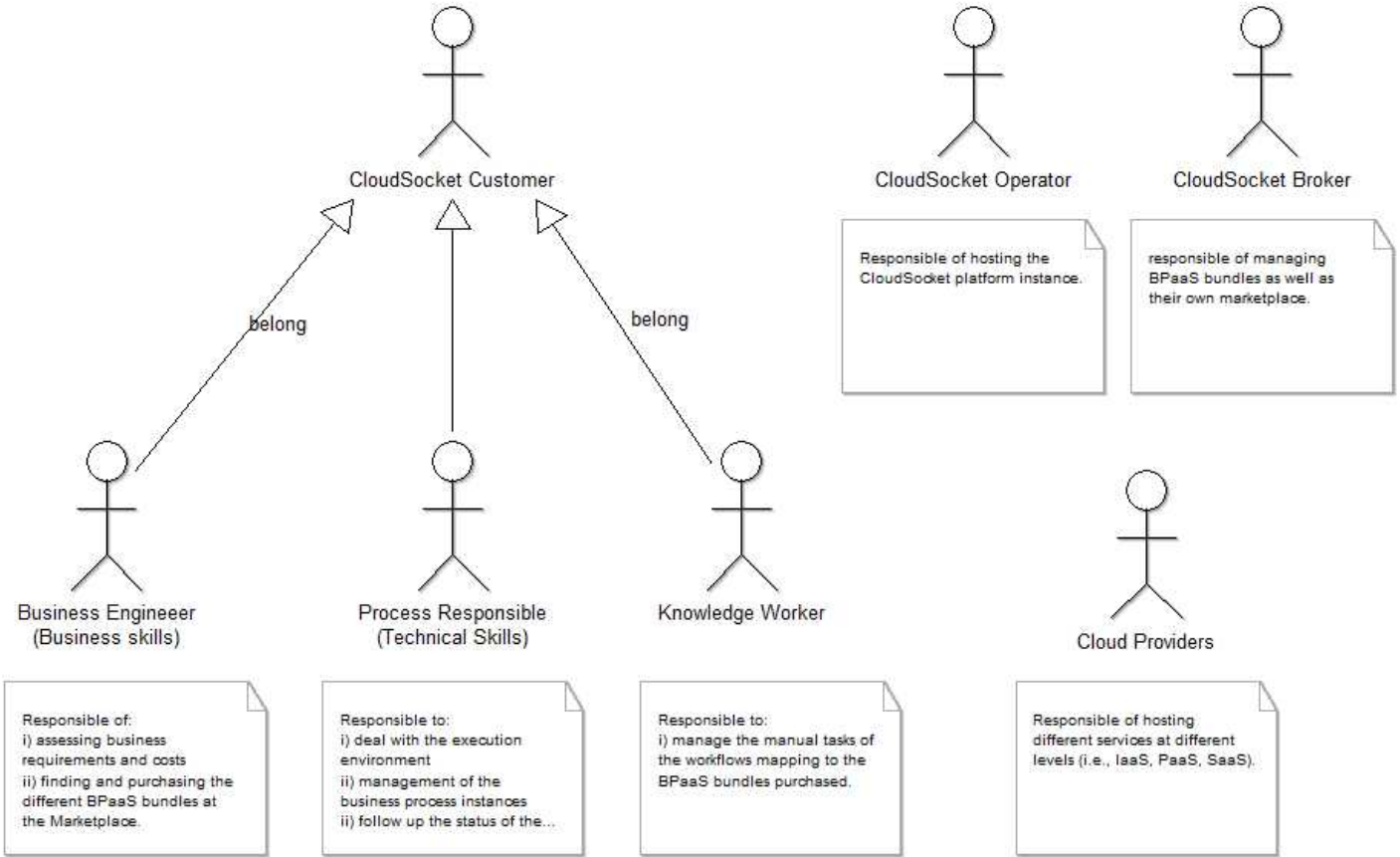
Model Content Export

Table of content:

Actors

Actors

Actors for Execution Environmet



Instances

Business Engineer (Business skills)(actor)

Position	STRING	NODE x:2cm y:11.5cm index:1
External tool coupling	STRING	
Visibility	ENUMERATION	protected
IsAbstract	ENUMERATION	no
IsLeaf	ENUMERATION	no
Description	STRING	
Comment	STRING	
Presentation	ENUMERATION	Standard
Extended properties	ENUMERATIONLIST	
User defined properties	STRING	
Open questions	STRING	

CloudSocket Broker(actor)

Position	STRING	NODE x:22cm y:4cm index:2
External tool coupling	STRING	
Visibility	ENUMERATION	public
IsAbstract	ENUMERATION	no
IsLeaf	ENUMERATION	no
Description	STRING	
Comment	STRING	
Presentation	ENUMERATION	Standard
Extended properties	ENUMERATIONLIST	
User defined properties	STRING	
Open questions	STRING	

Knowledge Worker(actor)

Position	STRING	NODE x:13cm y:11.5cm index:3
External tool coupling	STRING	
Visibility	ENUMERATION	public
IsAbstract	ENUMERATION	no

IsLeaf	ENUMERATION	no
Description	STRING	
Comment	STRING	
Presentation	ENUMERATION	Standard
Extended properties	ENUMERATIONLIST	
User defined properties	STRING	
Open questions	STRING	
CloudSocket Customer(actor)		
Position	STRING	NODE x:8cm y:4cm w:1.2cm h:2.57cm index:4
External tool coupling	STRING	
Visibility	ENUMERATION	public
IsAbstract	ENUMERATION	no
IsLeaf	ENUMERATION	no
Description	STRING	
Comment	STRING	
Presentation	ENUMERATION	Standard
Extended properties	ENUMERATIONLIST	
User defined properties	STRING	
Open questions	STRING	
CloudSocket Operator(actor)		
Position	STRING	NODE x:17cm y:4cm index:7
External tool coupling	STRING	
Visibility	ENUMERATION	public
IsAbstract	ENUMERATION	no
IsLeaf	ENUMERATION	no
Description	STRING	
Comment	STRING	
Presentation	ENUMERATION	Standard
Extended properties	ENUMERATIONLIST	
User defined properties	STRING	
Open questions	STRING	
comment-31172(comment)		
Position	STRING	NODE x:6cm y:1cm w:10.5cm h:1.5cm index:8
External tool coupling	STRING	
Font size	ENUMERATION	10
Font style	ENUMERATION	Bold
Keyword	STRING	
Body	STRING	Actors for Execution Environmet
Color	STRING	white
comment-31172-31200(comment)		
Position	STRING	NODE x:2.5cm y:16cm w:4.5cm h:3cm index:9
External tool coupling	STRING	
Font size	ENUMERATION	8
Font style	ENUMERATION	Standard
Keyword	STRING	
Body	STRING	Responsible of: i) assessing business requirements and costs ii) finding and purchasing the different BPaaS bundles at the Marketplace.
Color	STRING	white
Process Responsible (Technical Skills)(actor)		
Position	STRING	NODE x:8cm y:11.5cm index:10
External tool coupling	STRING	
Visibility	ENUMERATION	public
IsAbstract	ENUMERATION	no
IsLeaf	ENUMERATION	no
Description	STRING	
Comment	STRING	
Presentation	ENUMERATION	Standard
Extended properties	ENUMERATIONLIST	
User defined properties	STRING	
Open questions	STRING	
comment-31172-31200-31207(comment)		
Position	STRING	NODE x:8cm y:16cm w:4.5cm h:3cm index:12
External tool coupling	STRING	
Font size	ENUMERATION	8
Font style	ENUMERATION	Standard
Keyword	STRING	
Body	STRING	Responsible to: i) deal with the execution environment ii) management of the business process instances ii) follow up the status of the purchased BPaaS
Color	STRING	white
comment-31172-31200-31207-31210(comment)		

Position	STRING	NODE x:13.5cm y:16cm w:4.5cm h:3cm index:13
External tool coupling	STRING	
Font size	ENUMERATION	8
Font style	ENUMERATION	Standard
Keyword	STRING	
Body	STRING	Responsible to: i) manage the manual tasks of the workflows mapping to the BPaaS bundles purchased.

Color	STRING	white
-------	--------	-------

comment-31172-31200-31207-31210-31213(comment)

Position	STRING	NODE x:17cm y:8cm w:4.5cm h:3cm index:14
External tool coupling	STRING	
Font size	ENUMERATION	8
Font style	ENUMERATION	Standard
Keyword	STRING	
Body	STRING	Responsible of hosting the CloudSocket platform instance.

Color	STRING	white
-------	--------	-------

comment-31172-31200-31207-31210-31216(comment)

Position	STRING	NODE x:22cm y:8cm w:4.5cm h:3cm index:15
External tool coupling	STRING	
Font size	ENUMERATION	8
Font style	ENUMERATION	Standard
Keyword	STRING	
Body	STRING	responsible of managing BPaaS bundles as well as their own marketplace.

Color	STRING	white
-------	--------	-------

Cloud Providers(actor)

Position	STRING	NODE x:20cm y:12cm index:16
External tool coupling	STRING	
Visibility	ENUMERATION	public
IsAbstract	ENUMERATION	no
IsLeaf	ENUMERATION	no
Description	STRING	
Comment	STRING	
Presentation	ENUMERATION	Standard
Extended properties	ENUMERATIONLIST	
User defined properties	STRING	
Open questions	STRING	

Color	STRING	Standard
-------	--------	----------

comment-31172-31200-31207-31210-31213-31222(comment)

Position	STRING	NODE x:20cm y:16cm w:4.5cm h:3cm index:17
External tool coupling	STRING	
Font size	ENUMERATION	8
Font style	ENUMERATION	Standard
Keyword	STRING	
Body	STRING	Responsible of hosting different services at different levels (i.e., IaaS, PaaS, SaaS).

Color	STRING	white
-------	--------	-------

Relations

Business Engineer (Business skills)->CloudSocket Customer(generalization)

Positions	STRING	EDGE 0 index:5
Name	STRING	belong
Comment	STRING	
Description	STRING	
Extended properties	ENUMERATIONLIST	
AttrRep	STRING	NOTEBOOK CHAPTER "Description" ATTR "Name" ATTR "IsSubstitutable" ctrltype:check checked-value:"yes" unchecked-value:"no" ATTR "Extended properties" ATTR "Description" lines:4 ATTR "Comment" lines:4 CHAPTER "Presentation" ATTR "Show name" ctrltype:check checked-value:"yes" unchecked-value:"no" NOTEBOOK CHAPTER "Description" ATTR "Name" ATTR "IsSubstitutable" ctrltype:check checked-value:"yes" unchecked-value:"no" ATTR "Extended properties" ATTR "Description" lines:4 ATTR "Comment" lines:4

Docu	STRING	GRAPHREP SHADOW mode:off PEN w:0.02cm EDGE START END FILL color:white POLYGON 3 x1:-.5cm y1:.3cm x2:0cm y2:0cm x3:-.5cm y3:-.3cm MIDDLE AVAL v:"Show name" IF (v = "yes") ATTR "Name" x:0.1cm w:l h:b ENDIF AVAL e:"Extended properties" SET txt:"" IF (search(e, "{complete}", 0) >= 0) IF (search(txt, "{", 0) >= 0)
------	--------	--

GraphRep	STRING	
----------	--------	--

AnimRep HlpTxt	STRING STRING	<pre>SET txt:(txt+ " complete") ELSE SET txt:(txt+ "{complete}") ENDIF ENDIF IF (search(e, "{incomplete}", 0) >= 0) IF (search(txt, "{", 0) >= 0) SET txt:(txt+ " incomplete") ELSE SET txt:(txt+ "{incomplete}") ENDIF ENDIF IF (search(e, "{overlapping}", 0) >= 0) IF (search(txt, "{", 0) >= 0) SET txt:(txt+ " overlapping") ELSE SET txt:(txt+ "{overlapping}") ENDIF ENDIF IF (search(e, "{disjoint}", 0) >= 0) IF (search(txt, "{", 0) >= 0) SET txt:(txt+ " disjoint") ELSE SET txt:(txt+ "{disjoint}") ENDIF ENDIF IF (search(txt, "{", 0) >= 0) SET txt:(txt+ "\n") ENDIF IF (txt != "") TEXT (copy(txt,0,LEN txt)) x:0.1cm w:l h:t ENDIF</pre>
IsSubstitutable Show name	ENUMERATION ENUMERATION	<p>A generalization is a taxonomic relationship between a more general classifier and a more specific classifier. Each instance of the specific classifier is also an indirect instance of the general classifier. Thus, the specific classifier inherits the features of the more general classifier.</p> <p>no yes</p>
Knowledge Worker->CloudSocket Customer(generalization)		EDGE 0 index:6 belong
Positions Name Comment Description Extended properties AttrRep	STRING STRING STRING STRING ENUMERATIONLIST STRING	<pre>NOTEBOOK CHAPTER "Description" ATTR {Name" ATTR "IsSubstitutable" ctrltype:check checked-value:"yes" unchecked-value:"no" ATTR "Extended properties" ATTR "Description" lines:4 ATTR "Comment" lines:4 CHAPTER "Presentation" ATTR "Show name" ctrltype:check checked-value:"yes" unchecked-value:"no" NOTEBOOK CHAPTER "Description" ATTR {Name" ATTR "IsSubstitutable" ctrltype:check checked-value:"yes" unchecked-value:"no" ATTR "Extended properties" ATTR "Description" lines:4 ATTR "Comment" lines:4</pre>
Docu	STRING	<pre>GRAPHREP SHADOW mode:off PEN w:0.02cm EDGE START END FILL color:white POLYGON 3 x1:-.5cm y1:.3cm x2:0cm y2:0cm x3:-.5cm y3:-.3cm MIDDLE AVAL v:"Show name" IF (v = "yes") ATTR "Name" x:0.1cm w:l h:b ENDIF AVAL e:"Extended properties" SET txt:"" IF (search(e, "{complete}", 0) >= 0) IF (search(txt, "{", 0) >= 0) SET txt:(txt+ " complete") ELSE SET txt:(txt+ "{complete}") ENDIF ENDIF IF (search(e, "{incomplete}", 0) >= 0) IF (search(txt, "{", 0) >= 0) SET txt:(txt+ " incomplete") ELSE SET txt:(txt+ "{incomplete}") ENDIF ENDIF IF (search(e, "{overlapping}", 0) >= 0) IF (search(txt, "{", 0) >= 0) SET txt:(txt+ " overlapping") ELSE SET txt:(txt+ "{overlapping}") ENDIF ENDIF IF (search(e, "{disjoint}", 0) >= 0) IF (search(txt, "{", 0) >= 0) SET txt:(txt+ " disjoint") ELSE SET txt:(txt+ "{disjoint}") ENDIF ENDIF IF (search(txt, "{", 0) >= 0) SET txt:(txt+ "\n") ENDIF IF (txt != "") TEXT (copy(txt,0,LEN txt)) x:0.1cm w:l h:t ENDIF</pre>
GraphRep	STRING	<p>A generalization is a taxonomic relationship between a more general classifier and a more specific classifier. Each instance of the specific classifier is also an indirect instance of the general classifier. Thus, the specific classifier inherits the features of the more general classifier.</p> <p>no yes</p>
IsSubstitutable Show name	ENUMERATION ENUMERATION	EDGE 0 index:11
Process Responsible (Technical Skills)->CloudSocket Customer(generalization)		<pre>NOTEBOOK CHAPTER "Description" ATTR {Name" ATTR "IsSubstitutable" ctrltype:check checked-value:"yes" unchecked-value:"no" ATTR</pre>
Positions Name Comment Description Extended properties AttrRep	STRING STRING STRING STRING ENUMERATIONLIST STRING	

Docu	STRING	<p>"Extended properties" ATTR "Description" lines:4 ATTR "Comment" lines:4 CHAPTER "Presentation" ATTR "Show name" ctrltype:check checked-value:"yes" unchecked-value:"no" NOTEBOOK CHAPTER "Description" ATTR "Name" ATTR "IsSubstitutable" ctrltype:check checked-value:"yes" unchecked-value:"no" ATTR "Extended properties" ATTR "Description" lines:4 ATTR "Comment" lines:4</p>
GraphRep	STRING	<p>GRAPHREP SHADOW mode:off PEN w:0.02cm EDGE START END FILL color:white POLYGON 3 x1:-.5cm y1:.3cm x2:0cm y2:0cm x3:-.5cm y3:-.3cm MIDDLE AVAL v:"Show name" IF (v = "yes") ATTR "Name" x:0.1cm w:l h:b ENDIF AVAL e:"Extended properties" SET txt:"" IF (search(e, "{complete}", 0) >= 0) IF (search(txt,"{", 0) >= 0) SET txt:(txt+ " complete") ELSE SET txt:(txt+ "{complete}") ENDIF ENDIF IF (search(e, "{incomplete}", 0) >= 0) IF (search(txt,"{", 0) >= 0) SET txt:(txt+ " incomplete") ELSE SET txt:(txt+ "{incomplete}") ENDIF ENDIF IF (search(e, "{overlapping}", 0) >= 0) IF (search(txt,"{", 0) >= 0) SET txt:(txt+ " overlapping") ELSE SET txt:(txt+ "{overlapping}") ENDIF ENDIF IF (search(e, "{disjoint}", 0) >= 0) IF (search(txt,"{", 0) >= 0) SET txt:(txt+ " disjoint") ELSE SET txt:(txt+ "{disjoint}") ENDIF ENDIF IF (search(txt,"{", 0) >= 0) SET txt:(txt+ "\n") ENDIF IF (txt != "") TEXT (copy(txt,0,LEN txt)) x:0.1cm w:l h:t ENDIF</p>
AnimRep HlpTxt	STRING STRING	<p>A generalization is a taxonomic relationship between a more general classifier and a more specific classifier. Each instance of the specific classifier is also an indirect instance of the general classifier. Thus, the specific classifier inherits the features of the more general classifier. no no</p>
IsSubstitutable Show name	ENUMERATION ENUMERATION	